

## Rolcon Chain Driven Conveyor Rollers

Rolcon chain driven rollers or pallet rollers provide an economical way to make a powered conveyor system.

The rollers are available with either single or double sprockets and are welded onto the roller tube.

The double sprocket rollers are ideal for heavy duty applications, while the single sprocket rollers work well for light duty applications.

### FEATURES

- Galvanized steel tube
- ABEC 1 precision bearings
- Spring loaded on both ends
- Crimped tube ends
- Conductive bushing and bearing cap

### BENEFITS

- Easy to install
- Extremely long bearing life
- Corrosion resistant tube
- High load and speed capabilities

### TECHNICAL SPECIFICATIONS

#### Tubing:

Diameters – 1.9", 2.5"  
Tubes are 16 gauge (1.9) and 11 gauge (2.5) as standard, galvanized as standard.  
Other finishes available upon request.

#### Bearings:

ABEC 1 as standard  
Other bearings available upon request

#### Shaft:

Hexagonal: .437 (7/16) .687 (11/16)  
Shafts are spring loaded on both ends for ease of installation.  
Tapped ends, pin retained and other configurations available upon request

#### Sprocket:

1.9 diameter  
15 teeth - #50 chain  
18 teeth - #40 chain  
2.5 diameter  
15 teeth - #60 chain  
18 teeth - #50 chain

Other sprocket sizes available upon request.

Product Building

# ORDERING INFORMATION



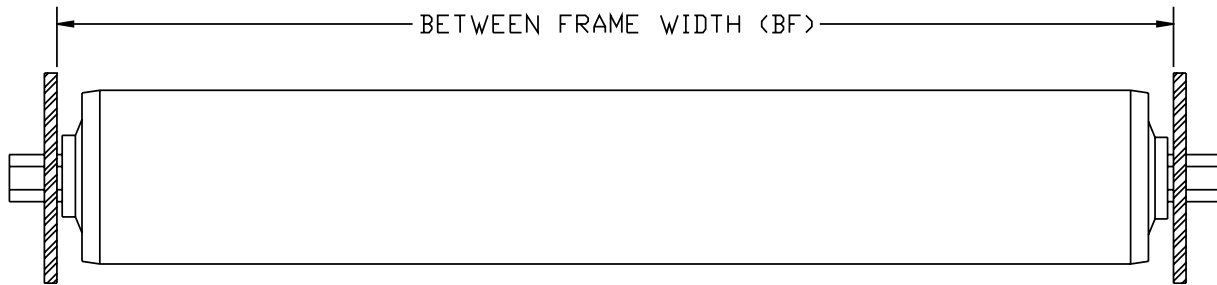
**IMPORTANT** - To ensure proper fit, the between frame dimension as measured from inside frame to inside frame is required.

**As standard Rolcon uses precision bearings and double spring loads the axle. Please specify any deviation from standard.**

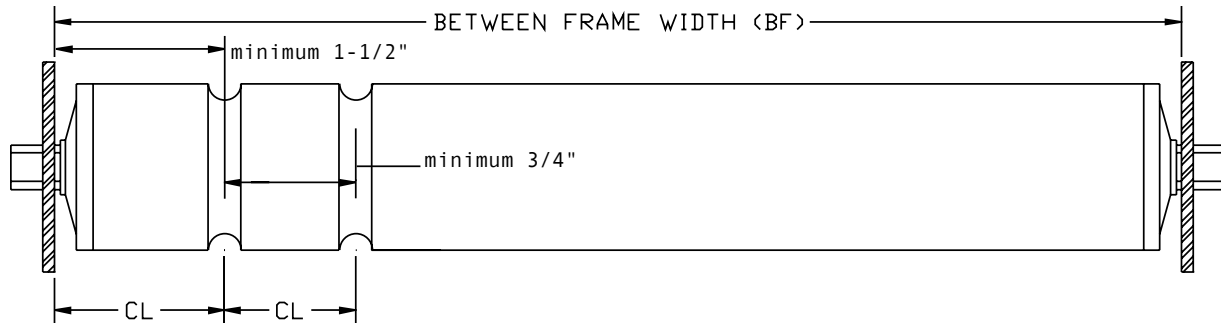
**NOTE:** Roughly 50% of our business is custom. If you cannot find what you want in the catalog, just fill out the order form and we will be happy to quote your own custom roller.

Between Frame Width _____	Roller Diameter _____
Wall Thickness (Gauge) _____	Axle Size _____
Axle Length _____	Type of Bearing _____
Groove Center Line _____ (if applicable)	Sprocket Size _____ (if applicable)
Single Spring Retained _____	Pin Retained _____

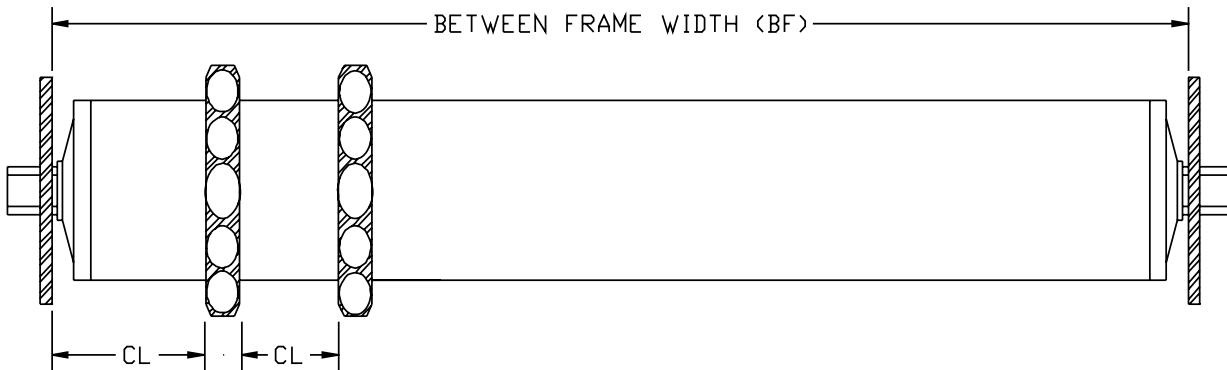
### Standard Roller / FS Series Roller



### Grooved Roller / FS Series Grooved Roller



### Roller with Sprockets



[www.rolconvenix.com](http://www.rolconvenix.com)

**Rolcon Rollers are double spring loaded unless otherwise specified**

**Orders for CUSTOM SIZED ROLLERS are always accepted.**